

**Ramakrishna Mission Vivekananda College (Autonomous)**  
Mylapore, Chennai-600 004

**Analysis of Student Satisfaction Survey**

IQAC has used a pre-tested questionnaire containing various questions on identification and opinion on teaching learning process covering students studying in all the courses offered in the college during 2019. The primary data was collected from 20 percent of the students studying in the first year, second year and third year Under Graduate courses; first and second year Post Graduate courses; M.Phil and Ph.D programmes on random sampling method. The collected data has been analysed by using appropriate statistical tools and the results are presented in the following tables.

**Table 1: Details of degree programme done by the students in the college**

Sl.No	Degree Programme	Frequency	Percent	Valid Percent	Cumulative Percent
1	Under Graduate	672	88.5	88.5	88.5
2	Post Graduate	83	10.9	10.9	99.5
3	M.Phil	2	.3	.3	99.7
4	Ph.D	2	.3	.3	100.0
	Total	759	100.0	100.0	

Source: Computed from students

Of the total 759 sample students about 88.5 percent of them are pursuing Under Graduate courses, 10.9 percent are in Post Graduate courses and 0.3 percent each in M.Phil and Ph.D programmes offered in the college.

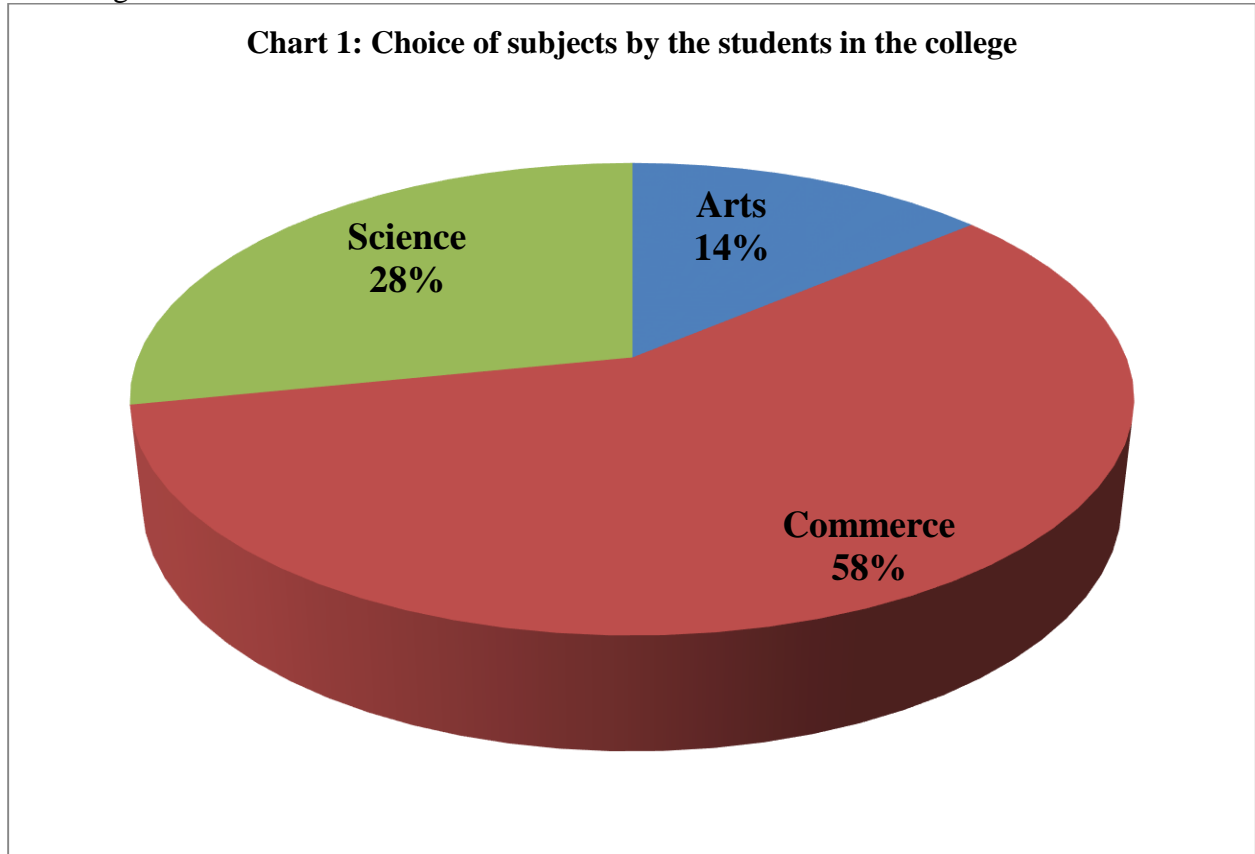
**Table 2: Choice of subjects by the students in the college**

Sl.No	Subjects	Frequency	Percent	Valid Percent	Cumulative Percent
1	Arts	105	13.8	13.8	13.8
2	Commerce	440	58.0	58.0	71.8
3	Science	214	28.2	28.2	100.0
	Total	759	100.0	100.0	

Source: Computed from students

The choice of subjects by the sample students presented in Table 2 portrays that the majority of them have chosen commerce stream with 58 percent followed by science 28.2

percent and arts 13.8 percent. Chart 1 presents the choice of subjects by the sample students in the college.



### **STUDENTS SATISFACTION SURVEY RESULTS AND DISCUSSION**

In the following section of this report, the opinion of the sample students on questions pertaining to teaching learning process. The questions cover the entire gamut of teaching learning process like course content, syllabus coverage, teacher's approach to teaching, internal evaluation process, performance in CIA known to you, performance in CIA test known to you, attendance position known to you, internet facilities, identify your strengths, encourage you participate in extra-curricular activities, Wi-Fi facility, timetable in advance, proper lighting, sanitation facilities, proximity, hygiene, co-curricular activities, campus is clean & eco-friendly, career guidance, value based education ,plastic-free campus, rain water harvesting, GYM, yoga, personality-development, literature of Swami Vivekananda etc., is discussed.

Table 3: Students opinion on having the complete course content in the college

Sl.No	Course content	Frequency	Percent	Valid Percent	Cumulative Percent
1	Yes	732	96.4	96.4	96.4
2	No	27	3.6	3.6	100.0
	Total	759	100.0	100.0	

Source: Computed from students

From table 3, it is evident that majority of the sample students i.e., 96.4 percent of them have consented that they have the complete course content of the subjects they study and the remaining 3.6 percent have denied with the same.

Table 4: Opinion of the Students on having the details of each paper taught in the class

Sl.No	Details of each paper	Frequency	Percent	Valid Percent	Cumulative Percent
1	Yes	745	98.2	98.2	98.2
2	No	14	1.8	1.8	100.0
	Total	759	100.0	100.0	

Source: Computed from students

With regard to the question on “Do you have the details of each paper taught in the class?” the opinion for ‘yes’ is 98.2 percent and for ‘no’ it is 1.8 percent of the sample students.

Table 5: Students opinion on syllabus coverage in the class (in percentage)

Sl.No	Syllabus coverage	Frequency	Percent	Valid Percent	Cumulative Percent
1	75 to 100	648	85.4	85.4	85.4
2	50 to 74	102	13.4	13.4	98.8
3	25 to 49	8	1.1	1.1	99.9
4	Less than 25	1	.1	.1	100.0
	Total	759	100.0	100.0	

Source: Computed from students

From the above table it is found that 85.4 percent of the students have expressed that 75 to 100 percentage of the syllabus of the subjects are covered in the class while 13.4 percent felt that 50 to 74 percentage is only covered in the class whereas the remaining felt that minimal amount of syllabus is only taught in the classroom. Chart 2 presents the opinion of the sample students on syllabus coverage.

**Charts 2: Students opinion on syllabus coverage in the class  
(in percentage)**

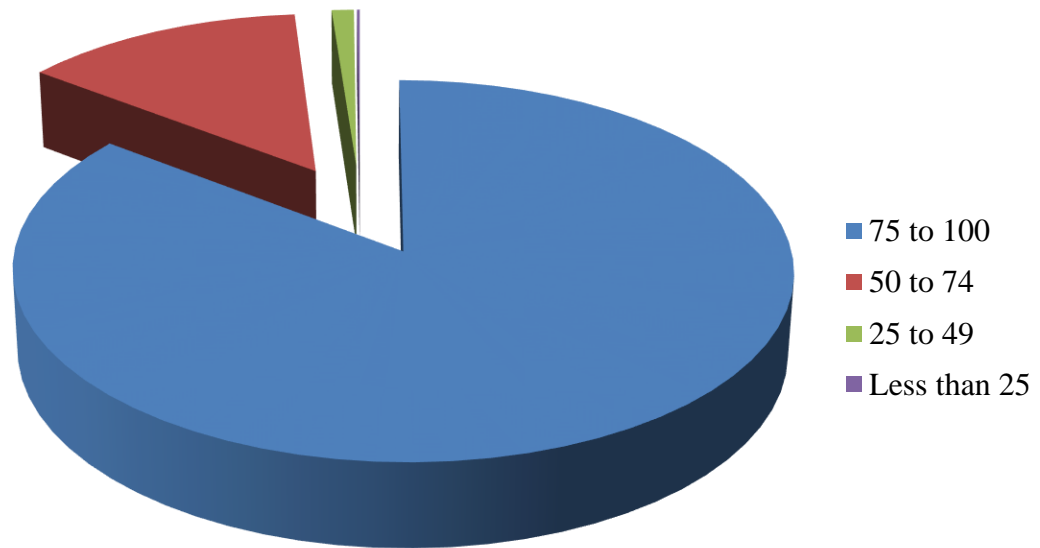


Table 6: Opinion of the students on the teacher's approach in teaching

<b>Sl.No</b>	<b>Teacher's approach</b>	<b>Frequency</b>	<b>Percent</b>	<b>Valid Percent</b>	<b>Cumulative Percent</b>
1	Excellent	358	47.2	47.2	47.2
2	Very good	270	35.6	35.6	82.7
3	Good	114	15.0	15.0	97.8
4	Fair	13	1.7	1.7	99.5
5	No opinion	4	.5	.5	100.0
	Total	759	100.0	100.0	

Source: Computed from students

Table 6 shows that 47.2 percent of the sample students have opined excellent for teacher's approach on teaching followed by 35.6 percent as very good, 15 percent as good, 1.7 percent as fair and the rest of 0.5 percent as no opinion on the same. The following Chart 3 exhibits the opinion of the sample students on teacher's approach in teaching which was helpful for them to grasp the subject.

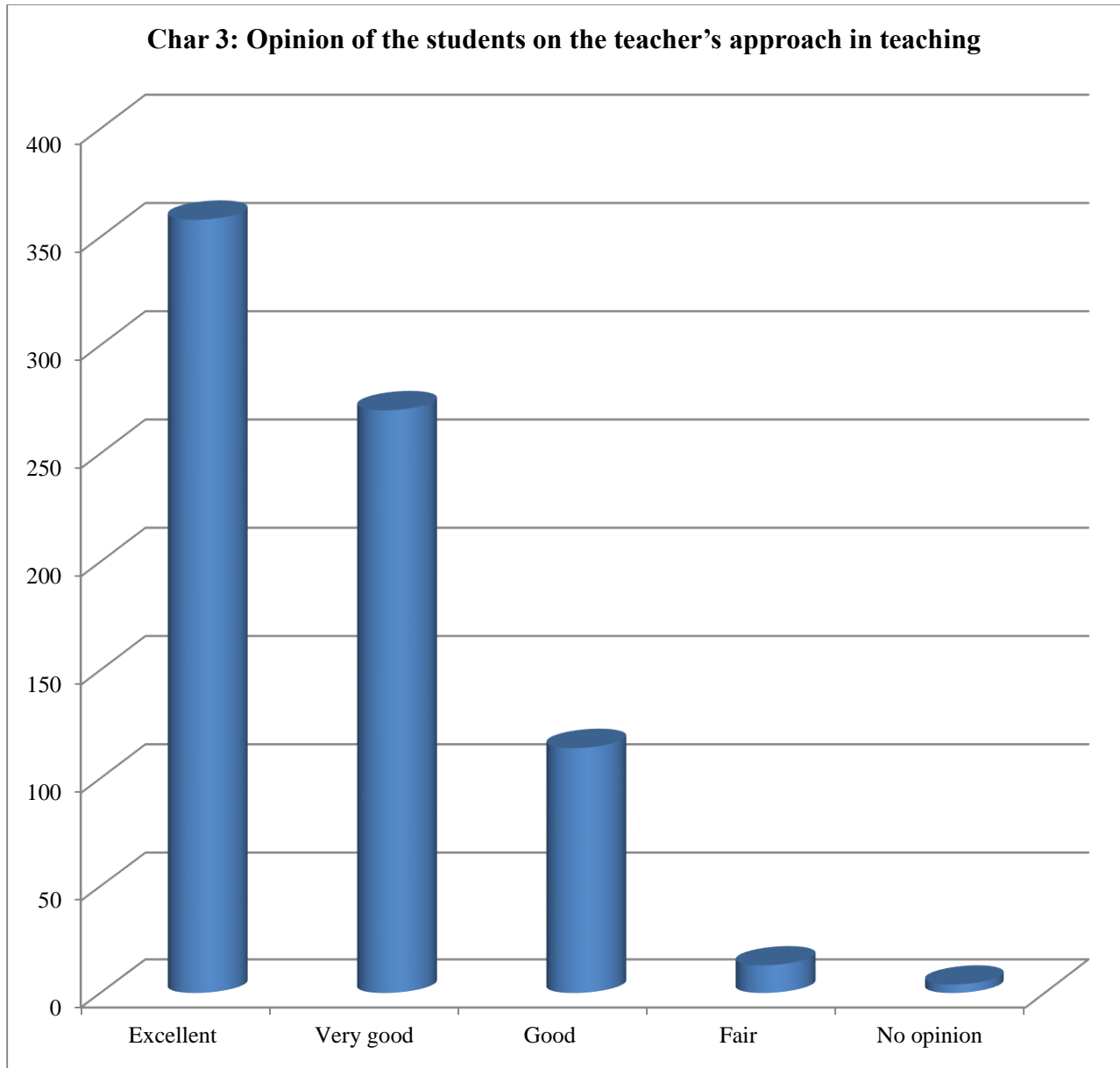


Table 7: Opinion by students on internal evaluation process by the teachers

Sl. No	Internal evaluation	Frequency	Percent	Valid Percent	Cumulative Percent
1	Always fair	566	74.6	74.6	74.6
2	Usually fair	151	19.9	19.9	94.5
3	Unfair	42	5.6	5.6	100.0
	Total	759	100.0	100.0	

Source: Computed from students

74.6 percent of the sample students have opined that the internal evaluation process by the teachers is always fair, 19.9 percent opined as usually fair and the rest of 5.6 percent as unfair internal evaluation process.

Table 8: Opinion by the students on their performance in CIA known to them

<b>Sl. No</b>	<b>CIA</b>	<b>Frequency</b>	<b>Percent</b>	<b>Valid Percent</b>	<b>Cumulative Percent</b>
1	Yes	707	93.1	93.1	93.1
2	No	32	4.2	4.2	97.4
3	No opinion	20	2.6	2.6	100.0
	Total	759	100.0	100.0	

Source: Computed from students

In the autonomous pattern followed in the college, the students were asked whether their internal assessment mark is known to them from their teachers. The opinion given in Table 8 portrays that 93.1 percent have opined yes followed by 4.2 percent as no and the rest of 2.6 percent have no opinion. The majority of the students have opined yes and hence CIA pattern is more transparent in the college and it is given in Chart 4.

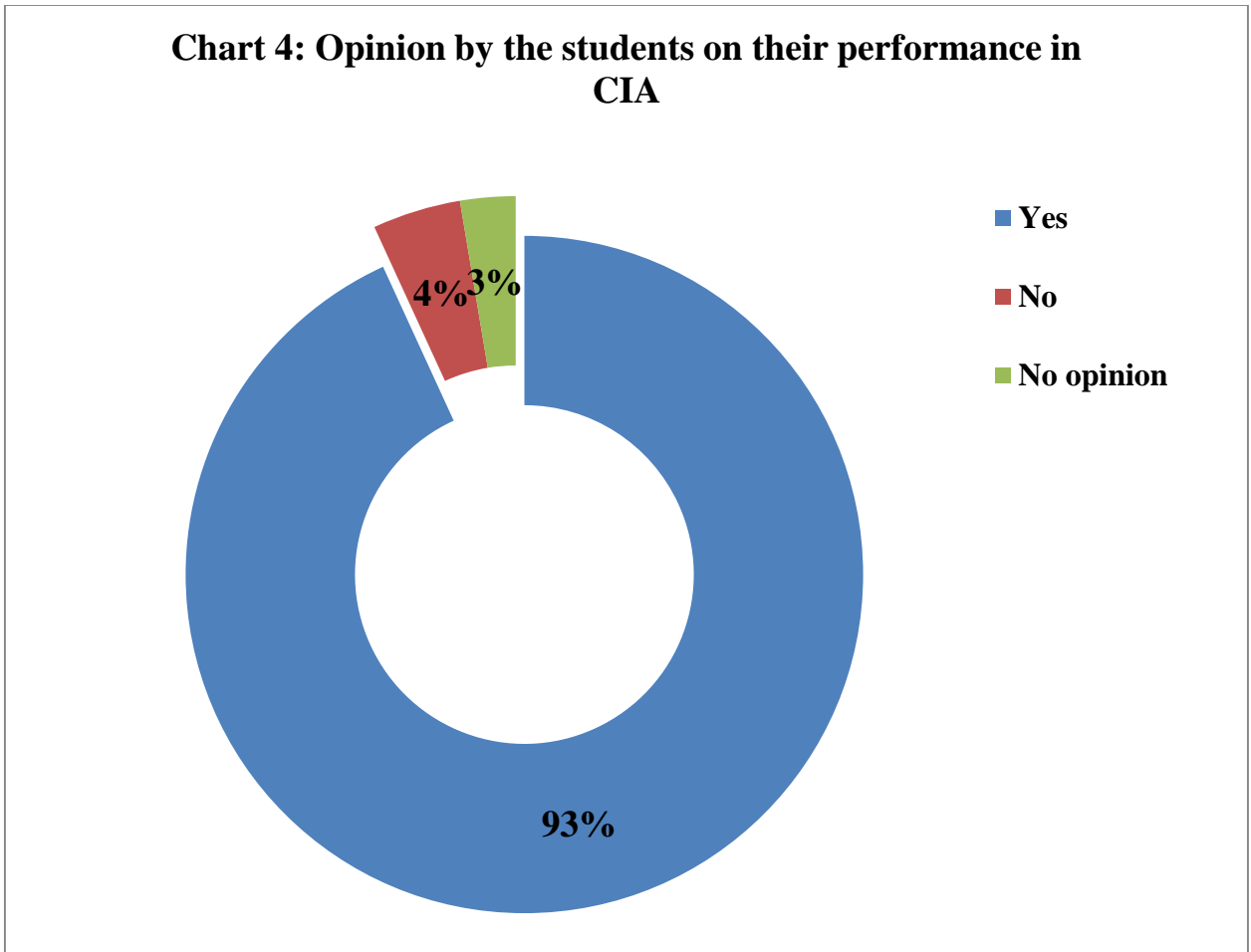


Table 9: Opinion by the sample students on their performance in CIA test is known to them

Sl. No	CIA Test	Frequency	Percent	Valid Percent	Cumulative Percent
1	Yes	717	94.5	94.5	94.5
2	No	35	4.6	4.6	99.1
3	No opinion	7	0.9	0.9	100.0
	Total	759	100.0	100.0	

Source: Computed from students

Periodical test is a component of CIA in the autonomous pattern followed in the college. Table 9 gives the opinion of the sample students on whether they are known to the CIA test marks given by the teachers in the college. It is opined yes by 94.5 percent, 4.6 percent as no and 0.9 percent as no opinion. The majority of the students have opined yes for CIA test marks known to them in the college as given in Chart 5.



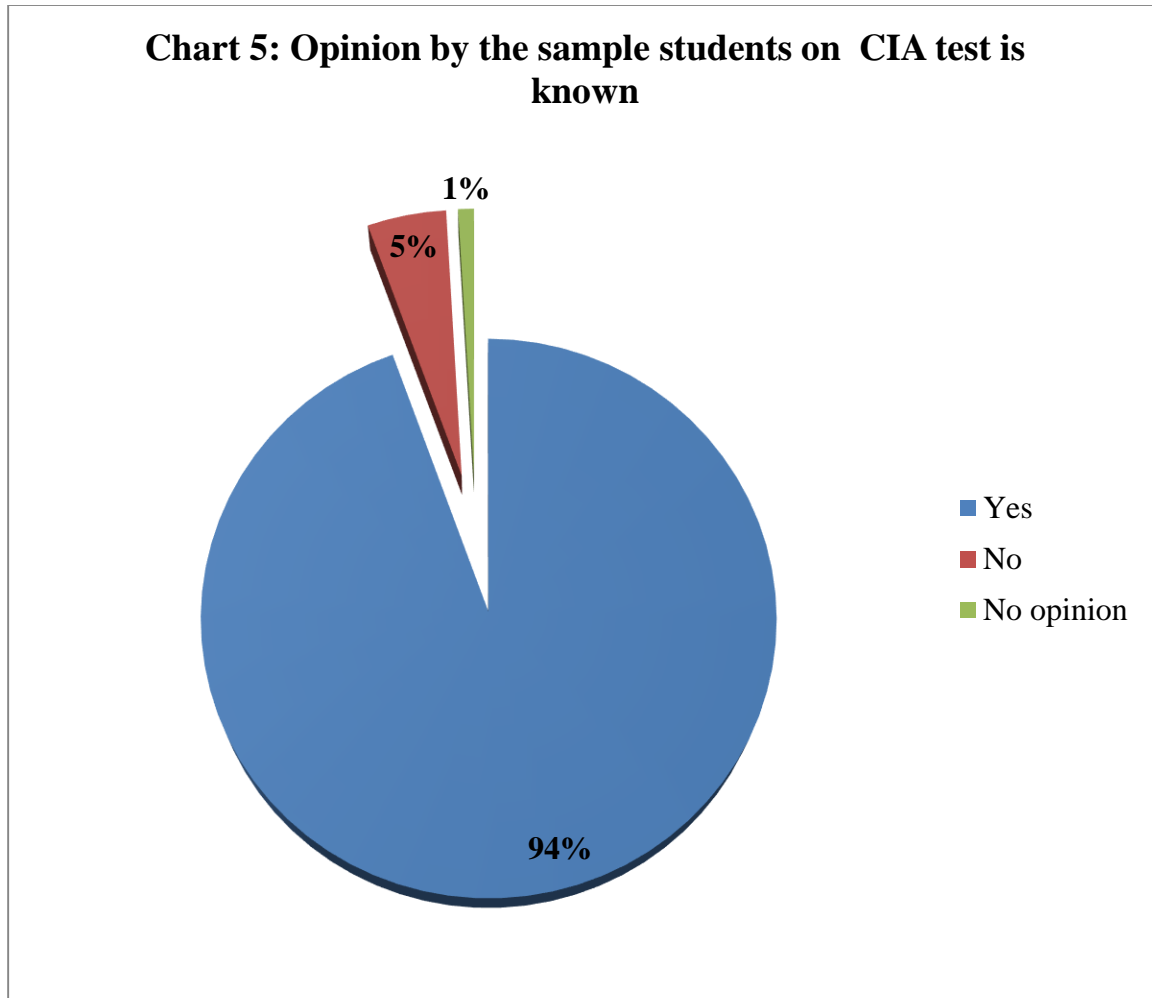


Table 10: Opinion by the students on their performance in CIA model test known to them

Sl. No	CIA model Test	Frequency	Percent	Valid Percent	Cumulative Percent
1	Yes	714	94.1	94.1	94.1
2	No	22	2.9	2.9	97.0
3	No opinion	23	3.0	3.0	100.0
	Total	759	100.0	100.0	

Source: Computed from students

The model exam is conducted before the semester examinations. It is conducted similar to semester examinations and the mark secured by the students is also part of CIA pattern in the college. Table 10 indicates that 94.1 percent have said yes, 2.9 percent as no and the rest of 3

percent as no opinion with respect to whether the students are known to CIA model test marks conducted in the college.

Table 11: Opinion by the students on their performance in CIA given to them

<b>Sl. No</b>	<b>Performance in CIA</b>	<b>Frequency</b>	<b>Percent</b>	<b>Valid Percent</b>	<b>Cumulative Percent</b>
1	Yes	703	92.6	92.6	92.6
2	No	23	3.0	3.0	95.7
3	No opinion	33	4.3	4.3	100.0
	Total	759	100.0	100.0	

Source: Computed from students

Table 11 shows that 92.6 percent of the sample students have opined yes followed by 3 percent as no and the rest of 4.3 percent as no opinion whether the students' performance in CIA is given to them.

Table 12: Opinion by the students on whether their attendance position known to them

<b>Sl. No</b>	<b>Performance in CIA</b>	<b>Frequency</b>	<b>Percent</b>	<b>Valid Percent</b>	<b>Cumulative Percent</b>
1	Yes	739	97.4	97.4	97.4
2	No	12	1.6	1.6	98.9
3	No opinion	8	1.1	1.1	100.0
	Total	759	100.0	100.0	

Source: Computed from students

Table 12 portrays that 97.4 percent of the sample students have opined yes and they are known with their attendance position followed by 1.6 percent as no and 1.1 percent no opinion.

Table 13: Opinion by the students on the internet facility provided by the institution

Sl.No	Internet facility	Frequency	Percent	Valid Percent	Cumulative Percent
1	Yes	641	84.5	84.5	84.5
2	No	76	10.0	10.0	94.5
3	No opinion	42	5.5	5.5	100.0
	Total	759	100.0	100.0	

Source: Computed from students

The opinion of the sample students on whether the institution provides internet facilities to enhance their skills is opined yes by the majority of 84.5 percent, 10 percent as no and 5.5 percent as no opinion.

Table 14: Opinion by the students on the library facilities provided by the institution

Sl.No	Library facility	Frequency	Percent	Valid Percent	Cumulative Percent
1	Yes	747	98.4	98.4	98.4
2	No	7	.9	.9	99.3
3	No opinion	5	.7	.7	100.0
	Total	759	100.0	100.0	

Source: Computed from students

With regard to the library facilities provided in the college about 98.4 percent of the sample students have opined yes, 0.9 percent as no and the rest of 0.7 percent as no opinion. This shows the interest of the students in using this facility given by the institution to upgrade their skills.

Table 15: Opinion by the students on whether their teachers identify their strengths and encourage them

Sl. No	Strength	Frequency	Percent	Valid Percent	Cumulative Percent
1	Yes	711	93.7	93.7	93.7
2	No	40	5.3	5.3	99.0
3	No opinion	8	1.0	1.0	100.0
	Total	759	100.0	100.0	

Source: Computed from students

The sample student's opinion on whether teachers identify their strengths and encourage them is opined yes by the majority of 93.7 percent followed by 1 percent as no opinion and 5.3 percent as no.

Table 16: Opinion by the students on teachers identifying their weaknesses and helping them to overcome it

Sl.No	Identifying	Frequency	Percent	Valid Percent	Cumulative Percent
1	Yes	689	90.8	90.8	90.8
2	No	68	9.0	9.0	99.8
3	No opinion	2	0.2	0.2	100.0
	Total	759	100.0	100.0	

Source: Computed from students

With regard to the opinion of the sample students on whether teachers identify their weaknesses and help them to overcome is opined yes by 90.8 percent, 9 percent as no and 0.2 percent as no opinion.

Table 17: Opinion by the students on whether teachers encourage them to participate in extra-curricular activities

Sl.No	Extra curricular	Frequency	Percent	Valid Percent	Cumulative Percent
1	Yes	640	84.3	84.3	84.3
2	No	46	6.1	6.1	90.4
3	No opinion	73	9.6	9.6	100.0
	Total	759	100.0	100.0	

Source: Computed from students

Table 17 gives the opinion of the sample students on whether teachers encourage them to participate in extra-curricular activities. It is opined yes by the majority of 84.3 percent of the students followed by 9.6 percent as no opinion and 6.1 percent as no.

Table 18: Opinion by the students on whether teachers are inculcating soft skills, life skills and employability skills ready to face the world

Sl.No	Inculcating	Frequency	Percent	Valid Percent	Cumulative Percent
1	Strongly Agree	373	49.1	49.1	49.1
2	Agree	337	44.4	44.4	93.5
3	Strongly Disagree	6	.8	.8	94.3
4	Disagree	18	2.4	2.4	96.7
5	No Opinion	25	3.3	3.3	100.0
	Total	759	100.0	100.0	

Source: Computed from students

The opinion by the students given in Table 18 on whether teachers are inculcating soft skills, life skills and employability skills that makes them ready to face the world shows that 49.1 percent have strongly agreed and 44.4 percent have agreed which forms the majority of 93.5 percent to stress their opinion that teachers are taking interest in inculcating soft skills, life skills and employability skills ready to face the world.

Table 19: Opinion by the students on the availability of internet facility in the campus

Sl.No	Internet	Frequency	Percent	Valid Percent	Cumulative Percent
1	Yes	661	87.1	87.1	87.1
2	No	40	5.3	5.3	92.4
3	No opinion	58	7.6	7.6	100.0
	Total	759	100.0	100.0	

Source: Computed from students

Table 19 portrays that 87.1 percent have opined yes, 5.3 percent have said no and 7.6 percent as no opinion for internet facility is available in the campus.

Table 20: Opinion by the students on the internet centre to download e-content

Sl.No	e-content	Frequency	Percent	Valid Percent	Cumulative Percent
1	Strongly Agree	353	46.5	46.5	46.5
2	Agree	216	28.5	28.5	75.0
3	Strongly Disagree	13	1.7	1.7	76.7
4	Disagree	49	6.5	6.5	83.1
5	No Opinion	128	16.9	16.9	100.0
	Total	759	100.0	100.0	

Source: Computed from students

As regards the opinion of the sample students on whether internet centre is available to download e-content is given in Table 20. It is found that 46.5 percent and 28.5 percent have strongly agreed and agreed respectively that the internet centre is available to download the e-content necessary for them while 1.7 percent and 6.5 percent have strongly disagreed and disagreed with the same fact. It is also seen that 16.9 percent have expressed no opinion on the same. Chart 6 presents the opinion of the students for downloading e-content for their studies in the college.

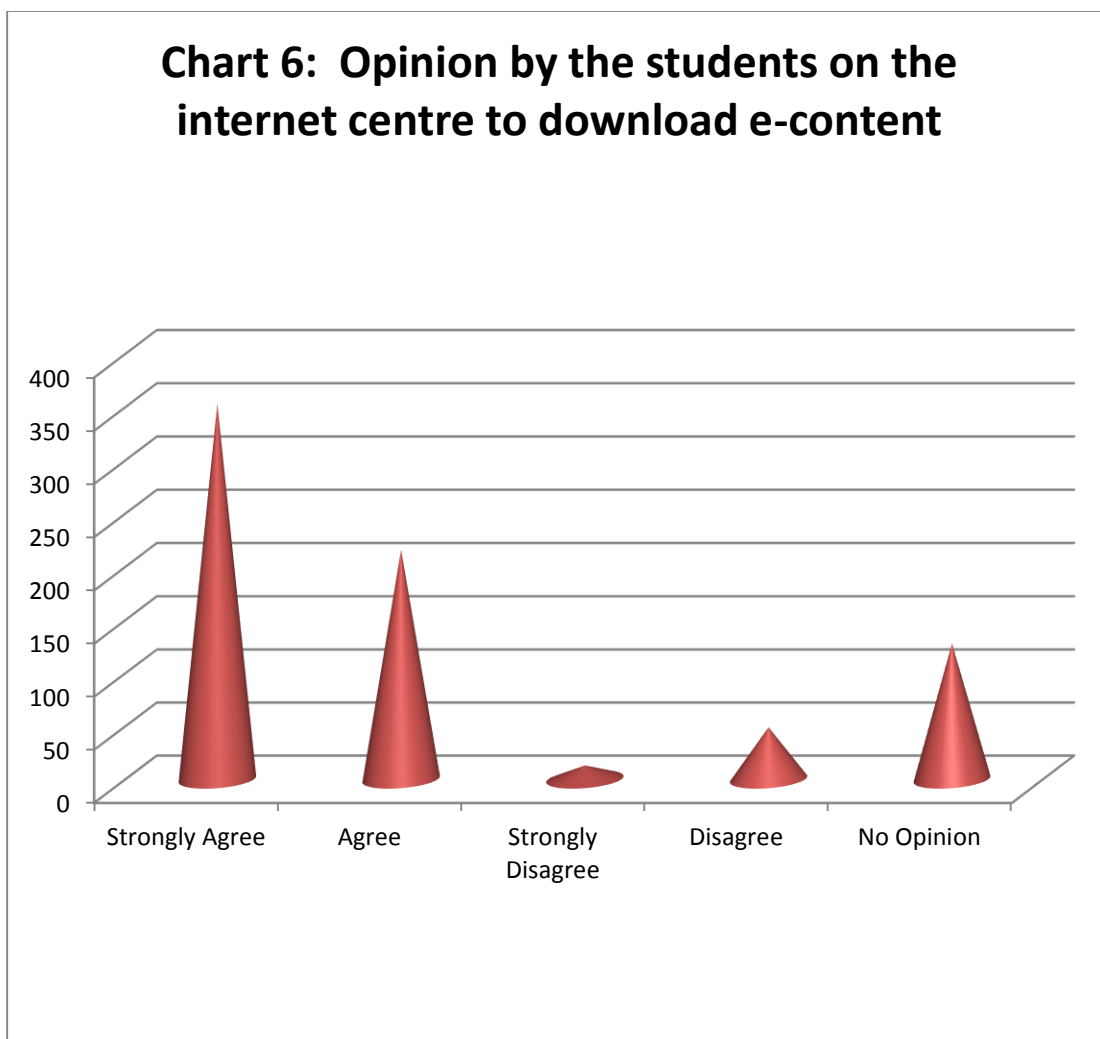


Table 21: Opinion by the students on the availability of Wi-Fi facility in the college

Sl.No	Wi-Fi facility	Frequency	Percent	Valid Percent	Cumulative Percent
1	Strongly Agree	376	49.5	49.5	49.5
2	Agree	261	34.4	34.4	83.9
3	Strongly Disagree	12	1.6	1.6	85.5
4	Disagree	51	6.7	6.7	92.2
5	No Opinion	59	7.8	7.8	100.0
	Total	759	100.0	100.0	

Source: Computed from students

From the above table on the opinion of the sample students on the availability of Wi-Fi facility in the college it is understood that majority of the respondents have agreed (strongly agreed by 49.5 and agreed by 34.4 percent with a cumulative percentage of 83.9) that the college provides them with such facility while 1.6 percent and 6.7 percent have strongly disagreed and disagreed with the fact whereas 7.8 percent had no opinion on the same.

Table 22: Opinion of the students whether COE office gives timetable in advance for semester end examinations

Sl.No	Time table	Frequency	Percent	Valid Percent	Cumulative Percent
1	Strongly Agree	611	80.5	80.5	80.5
2	Agree	140	18.4	18.4	98.9
3	Strongly Disagree	2	.3	.3	99.2
4	Disagree	3	.4	.4	99.6
5	No Opinion	3	.4	.4	100.0
	Total	759	100.0	100.0	

Source: Computed from students

Table 22 portrays the sample student's opinion on whether the COE office of the college provides the timetable in advance for their semester end examinations. It is clear that nearly 80.5 percent of the respondents have strongly agreed and 18.4 percent have agreed that the timetable is given well in advance to them for their examinations and less than 1 percent have disagreements on the same.

Table 23: Opinion of the Students on the Semester end results declared on time after the semester examinations

Sl.No	Semester end results declared on time	Frequency	Percent	Valid Percent	Cumulative Percent
1	Strongly Agree	485	63.9	63.9	63.9
2	Agree	213	28.1	28.1	92.0
3	Strongly Disagree	5	.7	.7	92.6
4	Disagree	12	1.6	1.6	94.2
5	No Opinion	44	5.8	5.8	100.0
	Total	759	100.0	100.0	

Source: Computed from students

With regard to the opinion of the sample students on table 23, it is found that 63.9 percent and 28.1 percent have strongly agreed and agreed that the semester end results are declared on



time after the semester examinations while 5.8 percent had no opinion on it whereas 1.6 percent and 0.7 percent have disagreed and strongly disagreed for the same as shown in Chart 7 given below.

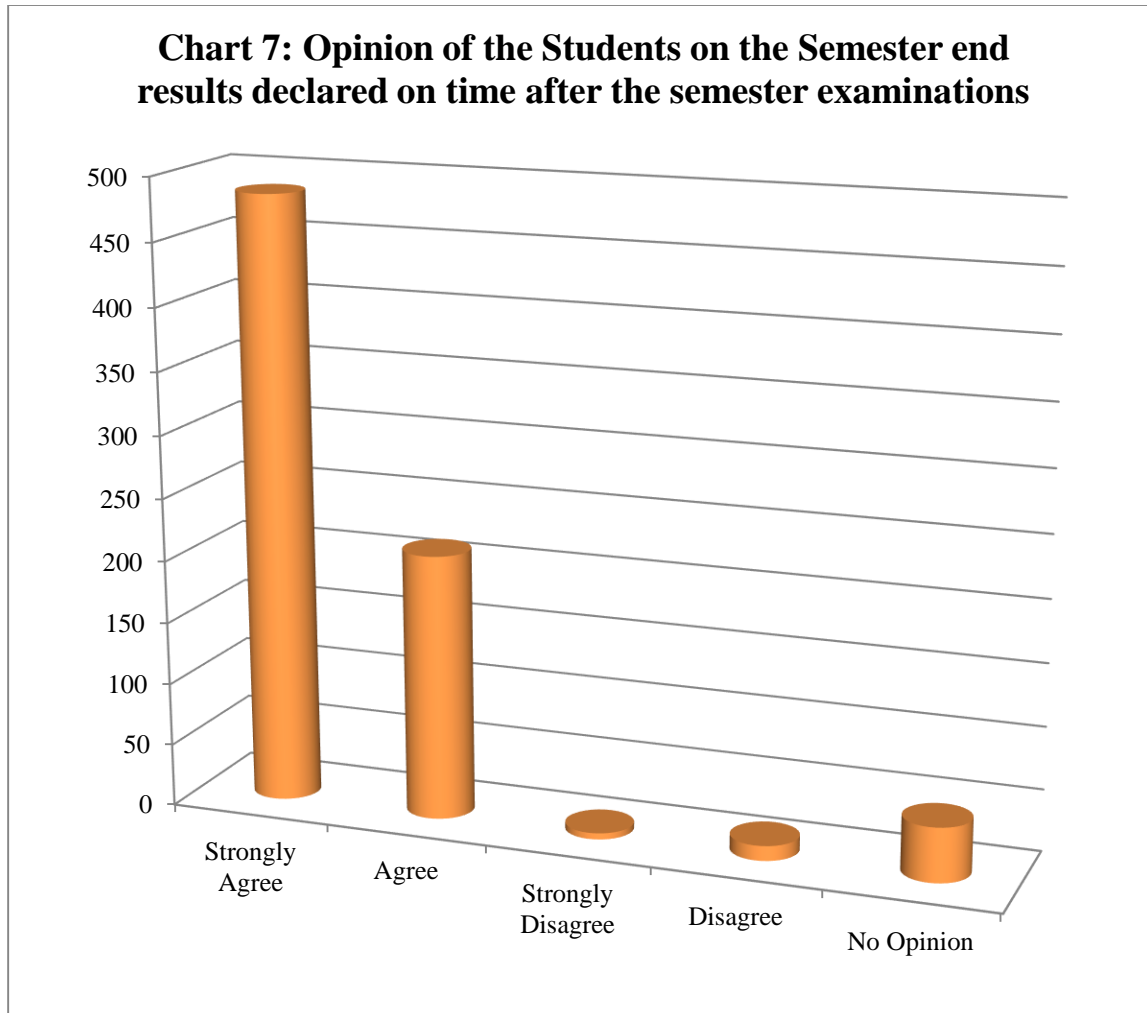


Table 24: Opinion of the Students on whether proper lighting is provided

Sl.No	Proper lighting	Frequency	Percent	Valid Percent	Cumulative Percent
1	Yes	742	97.8	97.8	97.8
2	No	8	1.1	1.1	98.8
3	No opinion	9	1.2	1.2	100.0
	Total	759	100.0	100.0	

Source: Computed from students

From table 24, the opinion of the sample students on whether proper lighting is provided to them it is seen that majority of the respondents have consented with it while 1.1 percent have expressed no opinion and 1.1 percent have said no for the same.

Table 25: Opinion of the Students on whether fans are provided

Sl.No	Fan	Frequency	Percent	Valid Percent	Cumulative Percent
1	Yes	739	97.4	97.4	97.4
2	No	15	2.0	2.0	99.3
3	No opinion	5	.7	.7	100.0
	Total	759	100.0	100.0	

Source: Computed from students

The above table shows that 97.4 percent of the respondents have said yes that the college provides them with fans while 2 percent have expressed no and 0.7 percent had no opinion on it.

Table 26: Opinion of the Students on the availability of proper Sanitation facilities in the campus

Sl.No	Sanitation facility	Frequency	Percent	Valid Percent	Cumulative Percent
1	Yes	711	93.7	93.7	93.7
2	No	15	2.0	2.0	95.7
3	No opinion	33	4.3	4.3	100.0
	Total	759	100.0	100.0	

Source: Computed from students

With regard to the sanitation facility provided in the campus, majority of the respondents (93.7 percent) have consented that proper facility has been given to them while 4.3 percent had no opinion and 2 percent have said no for the same. Chart 8 provides the opinion of the Students on the availability of proper sanitation facilities in the campus.

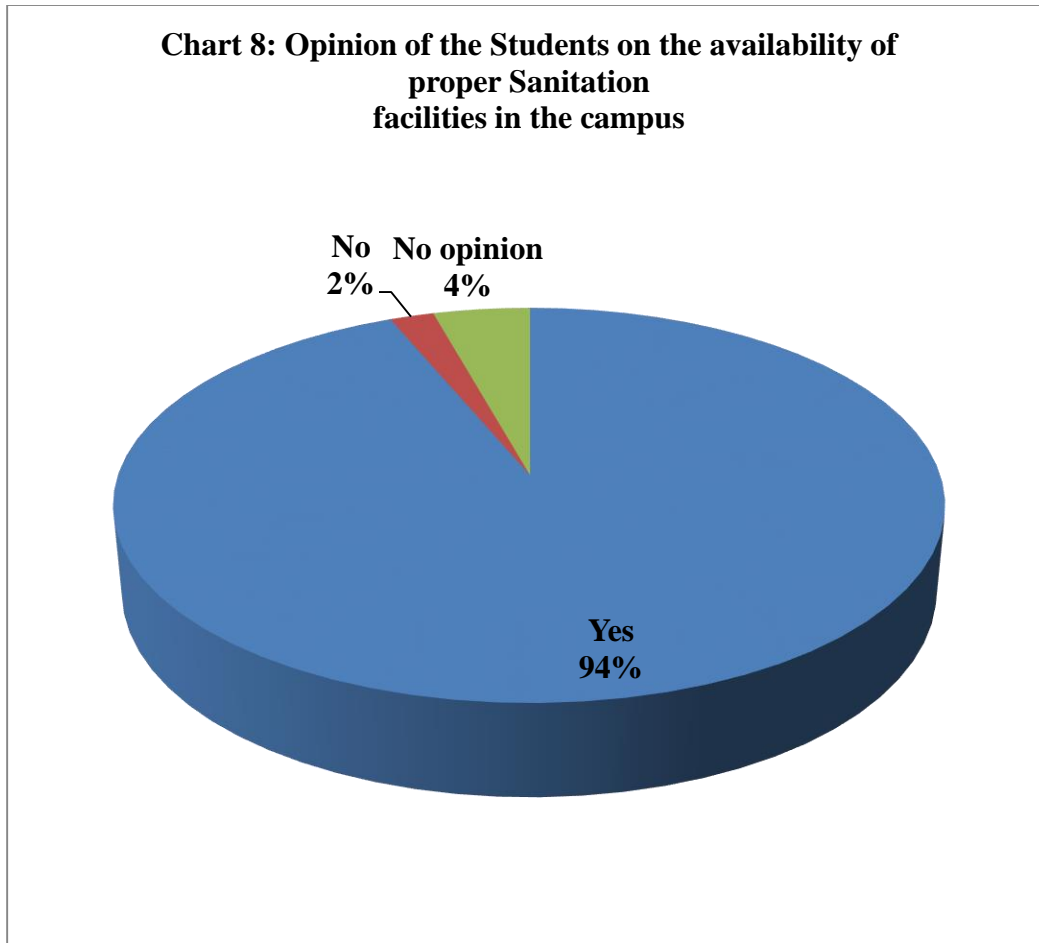


Table 27: Opinion of the Students on the Parking Facility in the campus

Sl.No	Parking facility	Frequency	Percent	Valid Percent	Cumulative Percent
1	Yes	723	95.3	95.3	95.3
2	No	8	1.1	1.1	96.3
3	No opinion	28	3.7	3.7	100.0
	Total	759	100.0	100.0	

Source: Computed from students

Table 27 shows the opinion of the students on the parking facility in the campus it is obvious that 95.3 percent have said yes that the college campus has enough parking facility while 3.7 percent had no opinion and 1.1 have said no to it.

Table 28: Opinion of the Students on the Proximity to Railway Station

Sl.No	Proximity to railway station	Frequency	Percent	Valid Percent	Cumulative Percent
1	Yes	695	91.6	91.6	91.6
2	No	17	2.2	2.2	93.8
3	No opinion	47	6.2	6.2	100.0
	Total	759	100.0	100.0	

Source: Computed from students

From the above table, it is found that 91.6 percent of the respondents have opined that the campus is near to the railway station while 2.2 percent and 6.2 percent have said no and expressed no opinion respectively on the same.

Table 29: Opinion of the Students on the Proximity to Bus-stand

Sl.No	Proximity to bus stand	Frequency	Percent	Valid Percent	Cumulative Percent
1	Yes	719	94.7	94.7	94.7
2	No	15	2.0	2.0	96.7
3	No opinion	25	3.3	3.3	100.0
	Total	759	100.0	100.0	

Source: Computed from students

As regards the proximity of the campus to the bus stand, majority of the respondents have said yes the campus is near to the bus stand while 3.3 percent had no opinion and 2 percent have said no to the same fact.

Table 30: Opinion of the Students on the Hygiene of the food provided in the canteen

Sl.No	Hygiene food in canteen	Frequency	Percent	Valid Percent	Cumulative Percent
1	Yes	528	69.6	69.6	69.6
2	No	88	11.6	11.6	81.2
3	No opinion	143	18.8	18.8	100.0
	Total	759	100.0	100.0	

Source: Computed from students

From the above table it is found that 69.9 percent have said yes that the college canteen provides them with hygiene food while 11.8 percent have said no and the remaining 18.8 percent expressed no opinion on the fact.

Table 31: Opinion of the Students on whether the College Office is helpful

Sl.No	College official helpful	Frequency	Percent	Valid Percent	Cumulative Percent
1	Yes	645	85.0	85.0	85.0
2	No	46	6.1	6.1	91.0
3	No opinion	68	9.0	9.0	100.0
	Total	759	100.0	100.0	

Source: Computed from students

Table 31 shows the opinion of the sample students on whether the college office is helpful to them, it is seen that majority of the respondents i.e., 85 percent have found the office helpful to them while 9 percent and 6.1 percent had no opinion and expressed no to the fact that the college office being helpful to them.

Table 32: Opinion of the Students on the Co-curricular activities like NCC, NSS & Rotaract etc., being helpful

Sl.No	Co-curricular	Frequency	Percent	Valid Percent	Cumulative Percent
1	Yes	673	88.7	88.7	88.7
2	No	26	3.4	3.4	92.1
3	No opinion	60	7.9	7.9	100.0
	Total	759	100.0	100.0	

Source: Computed from students

The above table portrays the opinion of the sample students on the co-curricular activities like NCC, NSS & Rotaract, etc being helpful to them. It is found that 88.7 percent have found these programmes helpful while 7.9 percent had no opinion whereas 3.4 percent didn't feel that helpful.

Table 33: Opinion of the Students on the Clean &amp; Eco-Friendly Campus

Sl.No	Clean and eco-friendly campus	Frequency	Percent	Valid Percent	Cumulative Percent
1	Yes	731	96.3	96.3	96.3
2	No	7	.9	.9	97.2
3	No opinion	21	2.8	2.8	100.0
	Total	759	100.0	100.0	

Source: Computed from students

With regard to the opinion of the sample students on the campus being clean and eco-friendly, it is obvious that majority of the respondents (96.3 percent) feel that the campus is clean and eco-friendly while 2.8 percent had expressed no opinion and less than 1 percent deny the same.

Table 34: Opinion of the Students on the availability of proper career guidance in the campus

Sl.No	Career guidance	Frequency	Percent	Valid Percent	Cumulative Percent
1	Yes	658	86.7	86.7	86.7
2	No	29	3.8	3.8	90.5
3	No opinion	72	9.5	9.5	100.0
	Total	759	100.0	100.0	

Source: Computed from students

Table 34 show that 86.7 percent of the respondents feel that campus provides them with proper career guidance while 3.8 percent have said no and 9.5 percent expressed no opinion on it.

Table 35: Opinion of the Students on the college website being helpful

Sl.No	College website	Frequency	Percent	Valid Percent	Cumulative Percent
1	Yes	647	85.2	85.2	85.2
2	No	46	6.1	6.1	91.3
3	No opinion	66	8.7	8.7	100.0
	Total	759	100.0	100.0	

Source: Computed from students

With regard to the college website being helpful to them as a question, it is found that 85.2 percent have said they find it helpful while 6.1 percent have said no and 8.7 percent had no opinion on it.

Table 36: Opinion of the Students on the value based education classes being helping to shape their future

Sl.No	Value based education	Frequency	Percent	Valid Percent	Cumulative Percent
1	Yes	646	85.1	85.1	85.1
2	No	40	5.3	5.3	90.4
3	No opinion	73	9.6	9.6	100.0
	Total	759	100.0	100.0	

Source: Computed from students

Table 36 portrays the opinion of the sample students on the value based education provided to them being helpful to shape their future. It is observed that 85.1 percent have said yes while 9.6 percent expressed no opinion and 5.3 percent have said no.

Table 37: Opinion of the Students on whether the greenery in the campus enhances the eco-friendliness

Sl.No	Greenery in the campus	Frequency	Percent	Valid Percent	Cumulative Percent
1	Yes	708	93.3	93.3	93.3
2	No	27	3.6	3.6	96.8
3	No opinion	24	3.2	3.2	100.0
	Total	759	100.0	100.0	

Source: Computed from students

The above table shows the opinion of the respondents on whether the greenery in the campus enhances the eco-friendliness, it is understood that majority of them feel that the greenery enhances the eco-friendliness of the campus while 3.6 percent and 3.2 percent have said no and had no opinion on the same respectively.

Table 38: Opinion of the Students on whether the campus is plastic-free campus

Sl.No	Plastic-free campus	Frequency	Percent	Valid Percent	Cumulative Percent
1	Yes	612	80.6	80.6	80.6
2	No	49	6.5	6.5	87.1
3	No opinion	98	12.9	12.9	100.0
	Total	759	100.0	100.0	

Source: Computed from students

With regard to the sample students opinion on whether the campus is plastic-free campus it is found that 80.6 percent have accepted the fact while 6.5 percent have said no and the remaining 12.9 percent have no opinion as given in the following Chart 9.

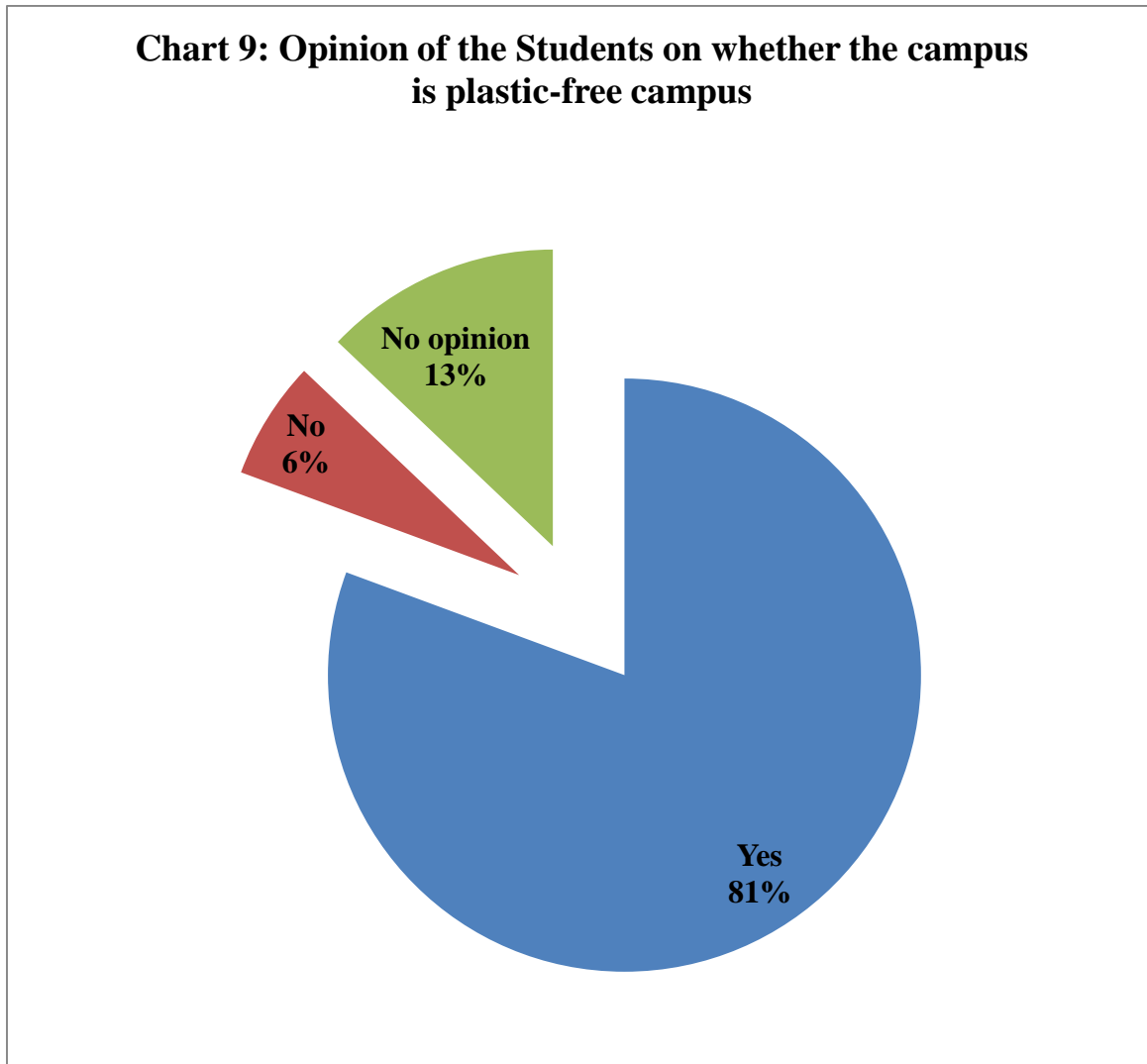




Table 39: Opinion of the Students on whether the campus has rain water harvesting facility

Sl.No	Rain water harvesting	Frequency	Percent	Valid Percent	Cumulative Percent
1	Yes	728	95.9	95.9	95.9
2	No	14	1.8	1.8	97.7
3	No opinion	17	2.3	2.3	100.0
	Total	759	100.0	100.0	

Source: Computed from students

As regards the opinion of the sample students on the rain water harvesting facility is built in the campus for which 95.9 percent have said yes while 1.8 percent have said no and 2.3 percent have no opinion for the same. Chart 10 gives the opinion of the Students on whether the campus has rain water harvesting facility.

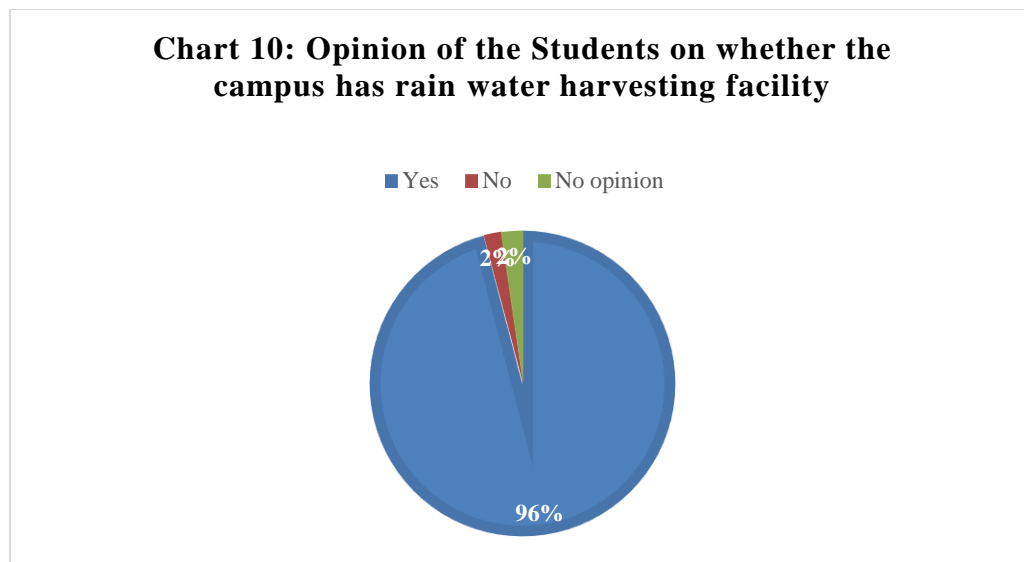


Table 40: Opinion of the Students on whether various sports facilities/GYM are available in the college campus

Sl.No	Sports facilities	Frequency	Percent	Valid Percent	Cumulative Percent
1	Yes	669	88.1	88.1	88.1
2	No	30	4.0	4.0	92.1
3	No opinion	60	7.9	7.9	100.0
	Total	759	100.0	100.0	

Source: Computed from students

Table 40 shows the sample students opinion on the various facilities/GYM available in the college campus, it is obvious that majority of the respondents have said yes the college provides such facilities while 4 percent have said no and remaining 7.9 percent have expressed no opinion.

Table 41: Opinion of the Students on whether international yoga day was celebrated with demonstration

Sl.No	International yoga day	Frequency	Percent	Valid Percent	Cumulative Percent
1	Yes	646	85.1	85.1	85.1
2	No	32	4.2	4.2	89.3
3	No opinion	81	10.7	10.7	100.0
	Total	759	100.0	100.0	

Source: Computed from students

With regard to the opinion of the students on the international yoga day being celebrated with demonstration in the campus, it is understood that 85.1 percent have said yes it was celebrated with demonstration while 10.7 percent had no opinion on it whereas 4.2 percent have said no to it.

Table 42: Opinion of the Students on whether they appreciate the Personality-Development Literature of Swami Vivekananda given to them

Sl.No	Literature of Swami Vivekananda	Frequency	Percent	Valid Percent	Cumulative Percent
1	Yes	709	93.4	93.4	93.4
2	No opinion	50	6.6	6.6	100.0
	Total	759	100.0	100.0	

Source: Computed from students

Table 42 portrays the opinion of the sample students on whether they appreciate the personality development literature of Swami Vivekananda is given to them. It is evident that 93.4 percent have appreciated it while 6.6 percent have expressed no opinion for the same.

\*\*\*